



Skyway Yacht Works - COLORS Regatta
June 2 – 3, 2018
Columbia Yacht Club
Chicago, Illinois (USA)

Inshore Buoy Course

SAILING INSTRUCTIONS

The notation ‘[DP]’ in a rule in the sailing instructions (SI) means that the penalty for a breach of that rule may, at the discretion of the protest committee, be less than disqualification.

1. RULES

- a. The regatta will be governed by the rules as defined in *The Racing Rules of Sailing (RRS)*.
- b. US Sailing prescription to 63.4 will not apply.
- c. RRS 55 is changed by adding the following sentence to the rule: “However, the use of biodegradable sail stops while setting a sail is permitted.”
- d. RRS Appendix T will apply.

2. NOTICES TO COMPETITORS

Notices to competitors and scheduled protests will be posted on the Racing Notice Board located at https://yachtscoring.com/notice_board.cfm?eid=4699

A unofficial Notice Board will be located at the Columbia Yacht Club; on the Raildeck just outside the Junior Sailing Classroom on the sliding door.

3. CHANGES TO SAILING INSTRUCTIONS

- a. Any change in the Sailing Instructions will be posted on the Racing Notice Board before 0830 CDT on the day it will take effect, except that any change in the schedule of races will be posted by 2000 CDT on the day before it will take effect.

4. SIGNALS MADE ASHORE

Signals made ashore will be made on the official notice board, https://yachtscoring.com/notice_board.cfm?eid=4699.

- a. When flag AP is displayed ashore, ‘1 minute’ is replaced with ‘not less than 30 minutes’ in the race signal AP.

5. SCHEDULE OF RACES AND EVENTS

Schedule of races and events is as follows:

Date	Time	Item
June 2, 2018	1130 hrs	First Warning
June 2, 2018	1900 hrs	Awards

- a. Six races are scheduled for each class.
- b. At the finish of each race, the Race Committee will indicate its intent to conduct a subsequent race by displaying the Code Flag A.
- c. No warning signal shall be given after 1430 hrs on Sunday June 3, 2018.

6. CLASS FLAGS

- a. Class flags will be:

CIRCLE	CLASS	CLASS FLAG
Inshore	J-70	1
	Shields	2
	Sonar	3

- b. Competitors are advised that classes may be combined in the starting order, yet still be scored separately.

7. RACING AREAS

- a. Approximately 2.0 nautical miles at a heading of 080 from the Belmont Harbor entrance. The Approximate coordinates are 41 57' North and 87 35.43' West.

8. CHECK-IN [DP]

- a. Prior to the first race of each day each boat shall check-in by sailing past the race committee signal boat and hailing her sail number. The race committee will acknowledge the hail.

9. COURSES

- a. The courses to be sailed will be windward-leeward with 4 to 6 legs.
- b. The attached Course Diagram shows a 4 leg course, the courses to be sailed by each class, the order in which marks are to be passed, and the side on which each mark is to be left.
- c. Courses will be designated as W/L 4 or W/L 6 when posted.
- d. The official length of the Course shall be determined by the Race Committee and shall not be grounds for redress.
- e. The Course selected, the number legs, the approximate magnetic bearing and distance to the windward mark will be displayed from a white board on the Race Committee Signal Boat with or before the Warning Signal.
- f. The leeward mark will be approximately 0.10 nm to windward of the starting line.

10. MARKS

- a. The starting mark and finish mark will be tetrahedrons, the starting mark will be to port of the signal boat, the finish will be to the starboard side of the signal boat.
- b. The marks of Course 1 will be tetrahedrons, change of course marks will be a different color tetrahedrons. There will be no offset mark or gate.

11. THE START

- a. The starting sequences for the first race on Saturday are as follows. Competitors should be aware that the starting order may be altered at any subsequent race.

Circle	Start 1	Start 2	Start 3
In-Shore	J-70	Shields	Sonar

- b. The starting line will be between a staff displaying an orange flag and the course side of a tetrahedron at the port end to port of signal boat.

12. RECALLS

- a. In the event of an individual recall, the sail numbers or identification of any boat or boats that are identified as OCS will be announced on the Race Committee VHF channel 78 the COLORS – Inshore buoy course. Failure of a boat to see or hear her recall notification, and the timing and

order of such hails, or the length of time it takes to make a notification on the VHF radio will not be grounds for redress. (This changes *RRS* 29.1 and 62.1 (a).)

13. THE FINISH

- a. The Finish Line will be between a staff displaying a Blue flag on the Starboard side of the Race Committee Signal Boat and a tetrahedron finishing mark.
- b. For downwind finishes, the Finish Line will be on the side opposite of the Race Committee Signal Boat from the Starting Line. For upwind finishes, the Finish Line will be on the port side of the RC Boat coming from the last mark.

14. PENALTY SYSTEM

- a. The Protest Desk will be located on rail deck of COLYC club ship. Protest forms will be available at the Protest Desk. Protests shall be delivered to the Protest Desk within the protest time limit.
- b. The Protest Time Limit is sixty (60) minutes after the Race Committee Signal Boat for each circle has docked. This changes rule 61.3
- c. Notices will be posted on the official notice board to inform competitors of hearings in which they are a party or named as witnesses. Notices of protests by the race committee or protest committee will be posted to inform boats under Rule 61.1(b).
- d. Images from a drone vehicle are not admissible as evidence to a protest or redress hearing.
- e. On the last day of the regatta a request for reopening a hearing shall be delivered within the protest time limit if the party requesting reopening was informed of the decision on the previous day; no later than 30 minutes after the party requesting reopening was informed of the decision on that day. This changes rule 66.

15. TIME LIMIT

- a. For a class in which no boat rounds the first windward mark within 45 minutes or finishes within two and a half (2½) hours, the race will be abandoned. Any boats not finishing within 30 minutes of the finish time of the first boat will be scored TLE (Time Limit Expired). This changes *RRS* 35.
- b. If a boat in last place in a race is delaying the next start, the race committee may order the race terminated for that boat and score the boat points equal to last place.

16. SCORING

- a. Each boat's series score will be the total score of all her races. There will be no discards, modifying Rule A2.1.
- b. Boats scored TLE (Time Limit Expired) shall be awarded two points more than the number of boats that finished within 45 minutes of the first boat. The score of TLE shall not exceed the score of a boat finishing last. This changes *RRS* A4.1 and A4.2.

17. SAFETY REGULATIONS

- a. Each class will abide by their class's safety guidelines.

18. WITHDRAWAL

- a. Boats that retire from a race or do not intend to start a subsequent race shall notify the Race Committee before leaving the race course on VHF 78. Boats that cannot communicate with the Race Committee, shall call Columbia Yacht Club at 312-938-3625 (312-WET-DOCK), as soon as possible. [DP]

19. RACE COMMITTEE COURTESY BROADCASTS

- a. The Race Committee may attempt to report visual signals displayed and other pertinent information over Channel 78 VHF for the Inshore racing circle. This information is provided as a courtesy to competitors and does not in any way alter their responsibility to observe the Race Committee's visual signals which govern the conduct of the race. Errors or omissions involving such courtesy broadcasts shall not be grounds for redress.

20. TRASH DISPOSAL

- a. The use of biodegradable sail stops while setting a sail is permitted.

21. RADIO COMMUNICATIONS

- a. Except in an emergency, a boat that is racing shall not make voice or data transmissions and shall not receive voice or data communications that are not available to all boats. [DP]

22. PRIZES

- a. Prizes will be awarded to the top three boats in each class of four or more boats.

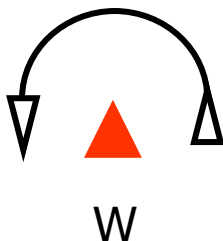
23. DISCLAIMER OF LIABILITY

- a. Competitors participate in the regatta entirely at their own risk. See RRS 4, Decision to Race. The race organizers (OA, Race Committee, Protest Committee, sponsors, or any other organization or official) will not accept any liability for material damage or personal injury or death sustained in conjunction with or prior to, during, or after the regatta. By participating in this race, each competitor agrees to release the race organizers from any and all liability associated with such competitor's participation in this event to the fullest extent permitted by law.

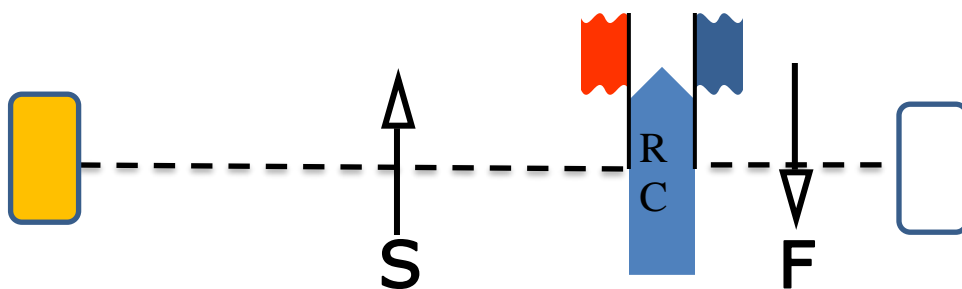
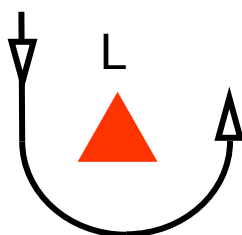
24. INSURANCE

25. Each participating boat shall be insured with valid third-party liability insurance with a minimum coverage of \$300,000 per event or the equivalent.

COURSE DIAGRAM



NOT TO SCALE



Inshore: W/L 4 or W/L 6

*Mark colors in this diagram may not apply, see instructions above.



Offshore Buoy Sailing Instructions

The notation '[DP]' in a rule in the sailing instructions (SI) means that the penalty for a breach of that rule may, at the discretion of the protest committee, be less than disqualification.

1. RULES

- 1.1. The regatta will be governed by the rules as defined in *The Racing Rules of Sailing (RRS)*.
- 1.2. In case of a conflict between the Notice of Race and the Sailing Instructions, the Sailing Instructions shall prevail. This changes *RRS* 63.7.
- 1.3. US Sailing prescriptions to 63.4 will not apply.
- 1.4. *RRS* 55 is changed by adding the following sentence to the rule: "However, the use of biodegradable sail stops while setting a sail is permitted."
- 1.5. *RRS* Appendix T will apply.

2. NOTICES TO COMPETITORS

Notices to competitors and scheduled protests will be posted on the Racing Notice Board located at https://yachtscoring.com/notice_board.cfm?eid=4699.

Notices will also be posted on the unofficial notice board at Columbia Yacht Club; on the Raildeck, just outside the juniors sailing classroom on the sliding door.

3. CHANGES TO SAILING INSTRUCTIONS

Any change in the Sailing Instructions will be posted on the Racing Notice Board before 0830 CDT on the day it will take effect, except that any change in the schedule of races will be posted by 2000 CDT on the day before it will take effect.

4. SIGNALS MADE ASHORE

- 4.1. Signals made ashore will be displayed from the mast of the Columbia Club Ship and as a courtesy on the event website at www.yachtscoring.com.
- 4.2. When flag AP is displayed ashore, '1 minute' is replaced with 'not less than 75 minutes' in the race signal AP.

5. SCHEDULE OF RACES AND EVENTS

5.1. Schedule of races and events is as follows:

Sat 2 June	1130	Warning signal for first race Circle 2
	1145	Warning signal for first race Circle 1
	1800	Skyway Yacht Works Party
	1900	Awards for Distance Race

Sun 3 June 1100 Warning signal for first race of Course 1 and Course 2
 1600 Awards

- 5.2. Six races are scheduled for each class. of which one must be completed to constitute a series.
 5.3. At the finish of each race, the Race Committee will indicate its intent to conduct a subsequent race by displaying the Code Flag A.
 5.4. No warning signal shall be given after 1430hrs on Sunday June 3, 2018.

6. CLASS FLAGS

- 6.1. Boats need not fly class flags while racing.
 6.2. Class flags will be:

CIRCLE	CLASS	CLASS FLAG
1	Farr40	1
	PHRF 1	2
	BEN 36.7	3
	J/111	4
	BEN 40.7	5
2	T-10	1
	J/88	2
	J/105	3
	J/109	4

- 6.3. Competitors are advised that classes may be combined in the starting order, yet still be scored separately.

7. RACING AREAS and COURSES

- 7.1. CIRCLE 1 will be located at or near LMSRF Area III Starting Area 3 (SA 3). The approximate coordinates are N 41° 54 and W 087° 32.
 7.2. CIRCLE 2 will be located approximately 3.5 nm at a heading of 100° from Monroe Harbor entrance. The approximate coordinates are N 41° 52 and W 087° 32.
 7.3. The courses to be sailed will be windward-leeward with 4 to 6 legs. The attached Course Diagram shows a 4 leg course, the courses to be sailed by each class, the order in which marks are to be passed, and the side on which each mark is to be left. The official length of the Course shall be determined by the Race Committee and shall not be grounds for redress.
 7.4. The Course selected, the number legs, the approximate magnetic bearing and distance to the first rounding mark (Marks W1 and W2) will be displayed from a sign-board on the Race Committee Signal Boat with or before the Warning Signal.
 7.5. The leeward mark (gate) will be approximately 0.10 nm to windward of the starting line. If one of the gate marks is absent, then the existing gate mark shall be rounded to port.
 7.6. Windward offset marks may be used. If the offset mark is absent, then the existing windward mark shall be rounded to port.

8. MARKS

8.1. The starting mark will be yellow. The finish mark will be white.

8.2. The marks of Course 1 will be orange tetrahedrons, change of course marks will be yellow tetrahedrons. The offset mark will be an orange tetrahedron.

8.3. The marks of Course 2 will be yellow tetrahedrons, change of course marks will be orange tetrahedrons. The offset mark will be a yellow tetrahedron.

9. THE START

9.1 The starting sequences for the first race on Saturday are as follows. Competitors should be aware that the starting order may be altered at any subsequent race.

Sequence	1	2	3	4	5
CIRCLE 1	Farr40	PHRF 1	BEN 36.7	J/111	BEN 40.7
CIRCLE 2	T-10	J/88	J/105	J/109	–

9.2 The starting line will be between a staff displaying an orange flag on the Race Committee boat at the starboard end and the course side a yellow mark at the port end of the line.

10. RECALLS

In the event of an individual recall, the sail numbers or identification of any boat or boats that are identified as OCS will be announced on the Race Committee VHF channel 72 for racing Circle 1 and Channel 71 for racing Circle 2. Failure of a boat to see or hear her recall notification, and the timing and order of such hails, or the length of time it takes to make a notification on the VHF radio will not be grounds for redress. (This changes RRS 29.1 and 62.1 (a).)

11. THE FINISH

11.1. The Finish Line will be between a staff displaying a blue flag on the Race Committee Signal Boat and a white finishing mark.

11.2. For downwind finishes, the Finish Line will be on the side opposite of the Race Committee Signal Boat from the Starting Line. For upwind finishes, the Finish Line will be on the port side of the RC Boat coming from the last mark. For windward finishes, the finish line will be approximately 0.10 nm to windward of Mark W2.

12. PENALTY SYSTEM

12.1. The Protest Desk will be located on rail deck of COLYC club ship. Protest forms will be available at the Protest Desk. Protests shall be delivered to the Protest Desk within the protest time limit.

12.2. The Protest Time Limit is sixty (60) minutes after the Race Committee Signal Boat for each circle has docked. This changes rule 61.3

12.3. Notices will be posted on the official notice board to inform competitors of hearings in which they are a party or named as witnesses. Notices of protests by the race committee or protest committee will be posted to inform boats under Rule 61.1(b).

12.4. Images from a drone vehicle are not admissible as evidence to a protest or redress hearing.

12.5. On the last day of the regatta a request for reopening a hearing shall be delivered

a. within the protest time limit if the party requesting reopening was informed of the decision on the previous day;

b. no later than 30 minutes after the party requesting reopening was informed of the decision on that day. This changes rule 66.

12.6 For the T-10 Class, RRS 44.1 is changed so that, except for infringements of Part 2 that occur within three boat lengths of a rounding mark, finishing mark, or boat-to-boat contact, only one turn, including one tack and one gybe, is required.

13 TIME LIMIT

13.1 Any race in which no boat in a class rounds the first windward mark within 45 minutes, or finishes within two and a half (2½) hours of the start shall be abandoned. Any boats not finishing within 45 minutes of the finish time of the first boat will be scored TLE (Time Limit Expired). This changes RRS 35.

13.2 If a boat in last place in a race is delaying the next start, the race committee may order the race terminated for that boat, and score the boat points equal to last place.

14 SCORING

14.1 The Low Point Scoring System, Appendix A, will apply. Each boat's series score will be the total score of all her races. There will be no discards, modifying Rule A2.

14.2 PHRF Class. Time-on-Distance using the PHRF Buoy rating will be utilized.

14.3 Boats scored TLE (Time Limit Expired) shall be awarded two points more than the number of boats that finished in her class within 45 minutes of the first boat. This changes RRS A4.1 and A4.2.

15 SAFETY REGULATIONS

Classes will abide by their offshore safety regulations according to their class rules.

16 WITHDRAWAL

Boats that retire from a race or do not intend to start a subsequent race shall notify the Race Committee before leaving the race course on her courses VHF Channel. Boats that cannot communicate with the Race Committee, shall call Columbia Yacht Club at 312-938-3625 (312-WET-DOCK), as soon as possible. [DP]

RACE COMMITTEE COURTESY BROADCASTS

The Race Committee may attempt to report visual signals displayed and other pertinent information over Channel 72 VHF for racing Circle 1 and Channel 71 VHF for racing Circle 2 (or an alternate channel as directed by the Race Committee). This information is provided as a courtesy to competitors and does not in any way alter their responsibility to observe the Race Committee's visual signals which govern the conduct of the race. Errors or omissions involving such courtesy broadcasts shall not be grounds for redress.

17 TRASH DISPOSAL

17.1. The use of biodegradable sail stops while setting a sail is permitted.

18 DOCKING

There will be a limited amount of complimentary dockage available at Columbia YC from 1500 hrs, Friday, June 1 through Sunday, June 3. This dockage will be in a side tie configuration on the East and South (Outer) sides of the dock.

19 RADIO COMMUNICATIONS

19.1. Except in an emergency, a boat that is racing shall not make voice or data transmissions and shall not receive voice or data communications that is not available to all boats. [DP]

20 PRIZES

Prizes will be awarded to the top three boats in each class of four or more boats.

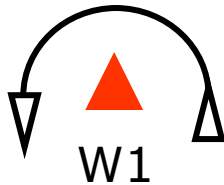
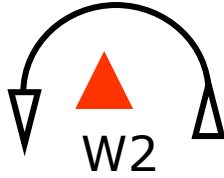
21 DISCLAIMER OF LIABILITY

Competitors participate in the regatta entirely at their own risk. See RRS 4, Decision to Race. The race organizers (OA, Race Committee, Protest Committee, sponsors, or any other organization or official) will not accept any liability for material damage or personal injury or death sustained in conjunction with or prior to, during, or after the regatta. By participating in this race, each competitor agrees to release the race organizers from any and all liability associated with such competitor's participation in this event to the fullest extent permitted by law.

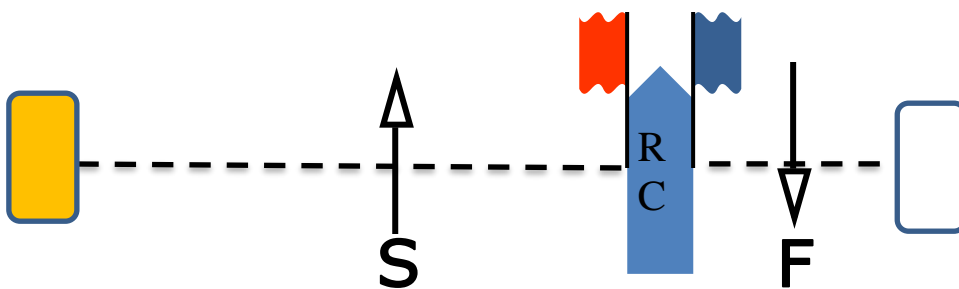
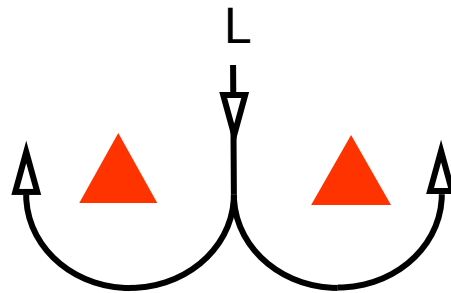
22 INSURANCE

Each participating boat shall be insured with valid third-party liability insurance with a minimum coverage of \$300,000 per event or the equivalent.

COURSE DIAGRAM



NOT TO SCALE



CIRCLE 1: B40.7, BEN 36.7, J/111: S-W1-L-W1-F
PHRF 1, FARR 40: S-W2-L-W2-F
CIRCLE 2: T-10, J/88: S-W1-L-W1-F
J/105, J/109: S-W2-L-W2-F

*Mark colors in this diagram may not apply, see instructions above.



Distance Sailing Instructions

The notation '[DP]' in a rule in the sailing instructions means that the penalty for a breach of that rule may, at the discretion of the protest committee, be less than disqualification.

1 RULES

- 1.1. The regatta will be governed by the rules as defined in *The Racing Rules of Sailing* (RRS).
- 1.2. In case of a conflict between the Notice of Race and the Sailing Instructions, the Sailing Instructions shall prevail. This changes RRS 63.7.
- 1.3. The US Sailing prescription to RRS 63.4 will not apply.
- 1.4. RRS Appendix T will apply.
- 1.5. Boats shall meet US Coast Guard safety requirements and comply with THE WORLD SAILING OFFSHORE SPECIAL REGULATIONS for 2018 – 2019 Category 4 ([http://www.sailing.org/tools/documents/WorldSailingOffshoreSpecialRegulations20182019180104-\[23449\].pdf](http://www.sailing.org/tools/documents/WorldSailingOffshoreSpecialRegulations20182019180104-[23449].pdf)).

2 NOTICES TO COMPETITORS

Notices to competitors and scheduled protests will be posted on the Racing Notice Board located at https://yachtscoring.com/notice_board.cfm?eid=4699.

Notices will also be posted on the unofficial notice board at Columbia Yacht Club; on the Raildeck, just outside the juniors sailing classroom on the sliding door.

3 CHANGES TO SAILING INSTRUCTIONS

Any change in the Sailing Instructions will be posted on the Racing Notice Board before 0830 CDT on the day it will take effect, except that any change in the schedule of races will be posted by 2000 CDT on the day before it will take effect.

4 SIGNALS MADE ASHORE

- 4.1. Signals made ashore will be displayed from the mast on the Columbia Yacht Club dock.
- 4.2. When flag AP is displayed ashore, “1 minute” is replaced with “not less than 75 minutes” in the race signal AP. This modifies RRS Race Signals.

5 SCHEDULE OF RACES AND EVENTS

Schedule of races and events is as follows:

Sat 3 June	1100	First Warning Signal
	1700	Skyway Party
	1900	Awards

6 SECTION BREAK and CLASS FLAGS

6.1. The Section Break between Offshore and Singlehanded (GLSS) classes and their class flags are shown in the Table below:

Class	Class Flag	Warning Signal
Section 1 58 or <	1	1100
Section 2 59 or >	3	1105
Cruising Class	4	1110
Singlehanded	5	1115
Doublehanded	6	1120

6.2. Competitors are advised that classes may be combined in the starting order, but be scored separately.

7 RACING AREA and COURSES

7.1. The starting area will be located at or near LMSRF Area III Starting Area 3 (SA 3). The SA 3 coordinates are N41°54 and W087°32.

7.2. Diagrams at the end of these instructions illustrates the Course, the order in which the marks are to be passed. All marks are to be left to STARBOARD.

7.3. The finish will be LMSRF Starting Area 4 (SA4). SA4 is located 2nm east of Buckingham Fountain at N 41° 52.30, W 87° 35.20

7.4. If the Race Committee is not on station at the finish line, finishing yachts shall follow the procedure outlined in the US Sailing prescription to RRS 34 as modified. The last sentence of the US Sailing prescription to RRS 34 is modified to read:

"If a boat finishes when the race committee is absent, to be scored as finishing she shall

1. Note her finishing time. The finish time shall be the GPS CDT time when the alternate finish line is crossed.

2. Notify the RC, on Channel 78, of their finish time (GPS CDT time) as soon as practical after finishing or email their finish time to Kurt@colyc.org".

8 MARKS

The starting mark will be yellow. The marks of the distance race will be fixed navigation marks. The finish mark will be an orange tetrahedron.

Fixed Navigation Mark	Approximate Latitude/Longitude		Description
Chicago Lake Front Northeast Shoal Lighted Buoy "2"	N 41 45.60	W 87 28.03	Flashing 4s Red

9 THE START

9.1. The starting sequence is as follows

Class	Class Flag	Warning Signal
Section 1	1	1100
Section 2	2	1105
Cruising Class	3	1110
Singlehanded	4	1115
Doublehanded	5	1120

- 9.2. The Race Committee may elect to combine classes in a start and will signal combined starts by flying class flags in combination.
- 9.3. The starting line will be between a staff displaying an orange flag on the Race Committee boat at the starboard end and a yellow tetrahedron at the port end of the line.
- 9.4. The Race Committee may set a guard mark attached to the stern of the Signal Boat. Yachts shall not pass between the guard mark and the RC boat.
- 9.5. Boats whose warning signal has not been made shall avoid the starting area during the starting sequence for other races. [DP]

10 RECALLS

In the event of an individual recall, the sail numbers or identification of any boat or boats that are identified as OCS will be announced on the Race Committee VHF channel 72. Failure of a boat to see or hear her recall notification, and the timing and order of such hails, or the length of time it takes to make a notification on the VHF radio will not be grounds for redress. (This changes *RRS* 29.1 and 62.1 (a).)

11 THE FINISH

The Finish Line will be between a staff displaying an orange flag on a Race Committee Signal Boat and an orange finishing mark.

12 PENALTY SYSTEM, PROTEST AND REQUEST FOR REDRESS

- 12.1. The Protest Desk will be located on the raildeck of COLYC club ship. Protest forms will be available at the Protest Desk. Protests shall be delivered to the Protest Desk within the protest time limit.
- 12.2. The Protest Time Limit is sixty (60) minutes after the Race Committee Signal Boat has docked. This changes *RRS* 61.3
- 12.3. Notices will be posted near the Protest Desk as soon as possible to inform competitors of hearings in which they are a party or named as witnesses.
- 12.4. Notices of protests by the race committee or protest committee will be posted to inform boats under Rule 61.1(b).
- 12.5. Images from a drone vehicle are not admissible in a protest or redress hearing. This changes *RRS* 63.6.

13 SCORING

- 13.1. The Low Point Scoring System, Appendix A, will apply.
- 13.2. Time-on-distance scoring will be utilized.
- 13.3. Boats scored TLE (Time Limit Expired) shall be awarded two points more than the number of boats that finished within the time limit, not to be greater than the number of boats registered for the race. This changes *RRS* A4.1 and A4.2.
- 13.4. One race is required to constitute a regatta.
- 13.5. No races shall be excluded. This changes *RRS* A2.1.

14 TIME LIMIT

The time limit will be 1600 hrs. Any boats not finishing within the time designated will be scored TLE (Time Limit Expired). This changes *RRS* 35.

15 WITHDRAWAL

Boats that retire from the race shall notify the Race Committee before leaving the race course on VHF 72. Boats that cannot communicate with the Race Committee, shall call Columbia Yacht Club at 312-938-3625 (312-WET- DOCK), as soon as possible. [DP]

16 RACE COMMITTEE COURTESY BROADCASTS

The Race Committee may attempt to report visual signals displayed and other pertinent information over VHF Channel 72. The Race Committee may change the channel by posting on a signboard on the signal boat prior to the first warning signal of each race. This information is provided as a courtesy to competitors and does not in any way alter their responsibility to observe the Race Committee's visual signals which govern the conduct of the race. Errors or omissions involving such courtesy broadcasts shall not be grounds for redress.

17 DOCKING

There will be a limited amount of complimentary dockage available at Columbia YC from 1500 hrs, Friday, June 1 through Sunday, June 3. This dockage will be in a side tie configuration on the East and South (Outer) sides of the dock.

18 PRIZES

Prizes will be awarded to the top three boats in each class with 4 or more finishers.

19 DISCLAIMER OF LIABILITY

Competitors participate in the regatta entirely at their own risk. See *RRS* 4, Decision to Race. The race organizers (OA, Race Committee, Protest Committee, sponsors, or any other organization or official) will not accept any liability for material damage or personal injury or death sustained in conjunction with or prior to, during, or after the regatta. By participating in this race, each competitor agrees to release the race organizers from any and all liability associated with such competitor's participation in this event to the fullest extent permitted by law.

21 INSURANCE

Each participating boat shall be insured with valid third-party liability insurance with a minimum coverage of \$300,000 per event or the equivalent.

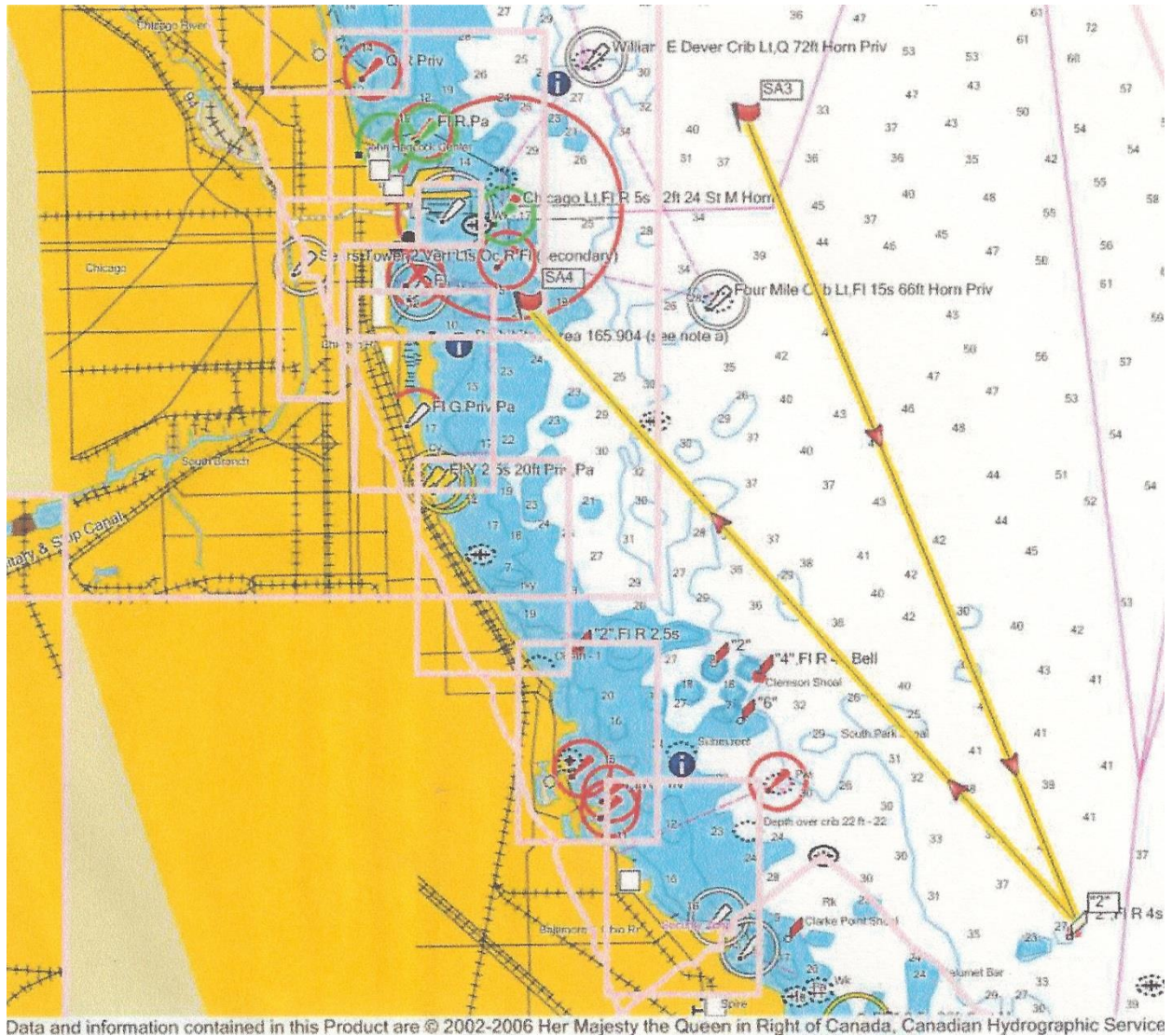
22 CONSENT

Competitors consent to the use of by the organizing authority of their name, image, photo, voice or visual recordings of their images ("Recordings"), or any statements, whether oral or written, regarding the regatta ("Statements") and for the organizing authority to use, sell, copy, distribute, preform, display, transit, or otherwise, exploit the foregoing Recordings, Statements and personal identifiers by any means and in any media known or hereafter devised. Competitors waive the right to credit or acknowledgement in conjunction with their identity, Recording or Statements and acknowledge that they shall have no right to inspect or approve any use of their identity, Recordings or Statements.

23 SAFETY REGULATIONS

Boats shall meet US Coast Guard safety requirements and comply with THE WORLD SAILING OFFSHORE SPECIAL REGULATIONS for 2018 – 2019 Category 4 ([http://www.sailing.org/tools/documents/WorldSailingOffshoreSpecialRegulations20182019180104-\[23449\].pdf](http://www.sailing.org/tools/documents/WorldSailingOffshoreSpecialRegulations20182019180104-[23449].pdf)).

Distance Course



The course to be sailed: Start (SA3) – Chicago Lake Front Northeast Shoal Lighted Buoy 2-
Finish (SA4) Approximate Distance: 17.5nm